



# Absa Pension Fund

Pensioner information session 2021

2021

Adele Roux

# Board of Trustees

## Member-elected Trustees

- 4 elected
- 3-year term
- Next election - Nov 2022



Charles Erasmus



Frikkie de Jager



Juliana Nel



Denise Mantle

## Employer-appointed Trustees

- 4 appointed
- 3-year term
- Next term - Nov 2022



Colin Beggs



Parin Gokaldas



Fagmeedah  
Petersen-Cook



Jason Quinn

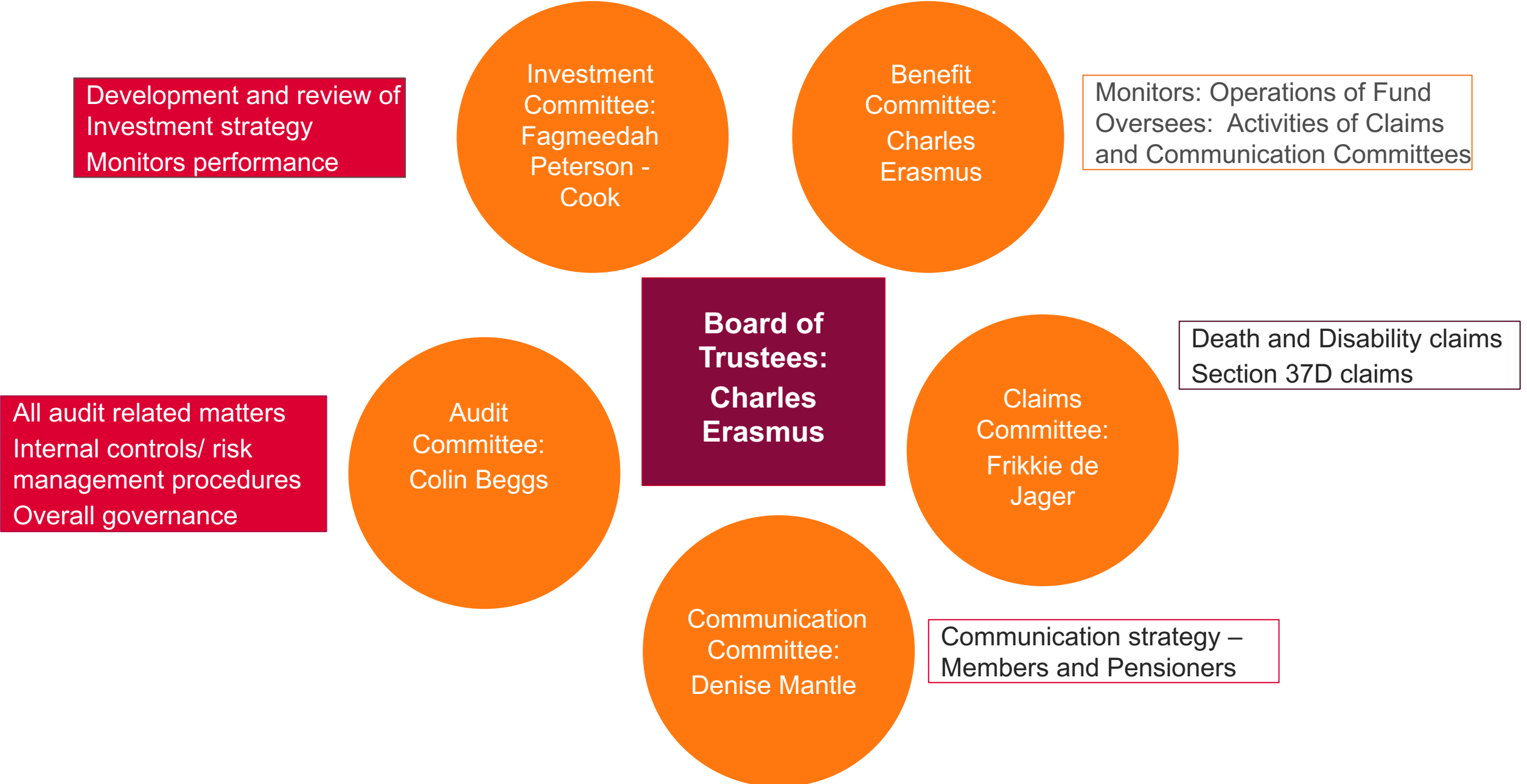
# Principal Officer



Anesh Soonder

- Involved in the retirement funds industry for over 20 years.
- Various legal and related qualifications, including a Bachelor of Arts in Law (BA Law) and Bachelor of Laws (LLB) from the University of Natal, a Master of Laws (LLM) from the University of South Africa, Certificates in Compliance Management and Finance from the Compliance Institute of South Africa and WITS Business School respectively, and has recently completed the Chartered Principal Executive Officer qualification with Batseta.
- In addition to running a law firm, he brings expertise to various boards of retirement funds, fulfilling roles such as Independent Trustee, Chairperson and Principal Officer.
- Some of the other roles he has fulfilled include that of Legal Adviser, Head of Compliance, Chief Operating Officer and Chief Executive Officer in the corporate sector.

# Fund Structure and Governance



# Service providers

Administration	:	Sanlam Corporate
Consulting	:	Simeka Consultants and Actuaries
Asset Consulting	:	Simeka Consultants and Actuaries
Actuarial	:	WillisTowersWatson
External auditors	:	PricewaterhouseCoopers
Investment administration	:	Sygnia
Group life cover	:	Absa Life
Funeral cover	:	Absa Life

# Summary of Financial Results 31 March 2021 (R'000)

TOTAL FUNDS AND RESERVES (beginning)	R 29 028 144
--------------------------------------	--------------



Contributions	R 1 989 388
---------------	-------------



Investment Income	R 8 642 052
-------------------	-------------

24.85% of  
ave assets



Expenses	R 36 012
----------	----------

0.1% of  
assets



Benefits	R 2 429 561
----------	-------------

SUB-TOTAL (net profit)	R 8 165 867
------------------------	-------------

TOTAL FUNDS AND RESERVES (end)	R 37 194 011
--------------------------------	--------------

Investments	R 38 488 066
-------------	--------------

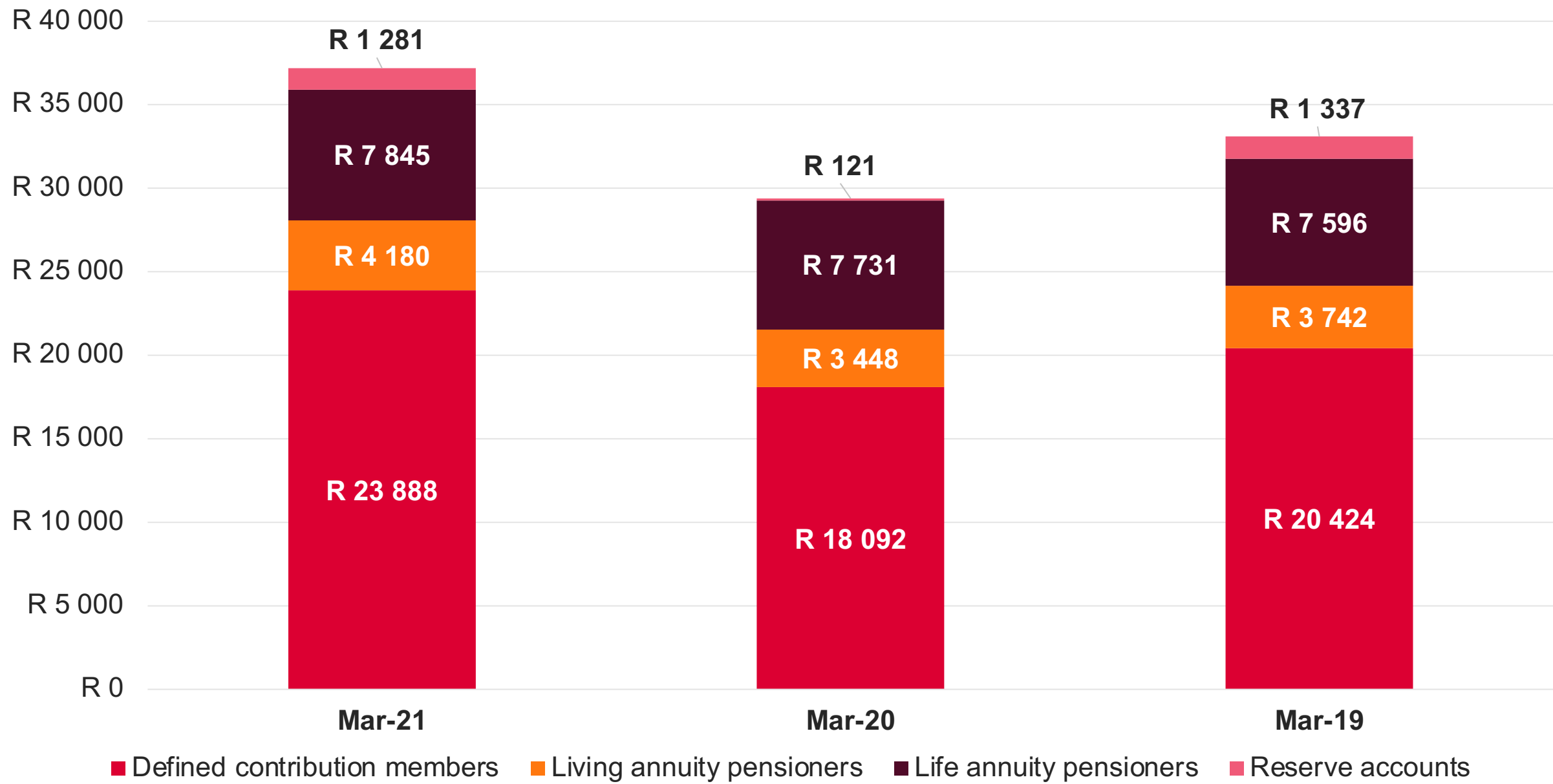
Current Assets	R 111 973
----------------	-----------

Current Liabilities	(R 931 224)
---------------------	-------------

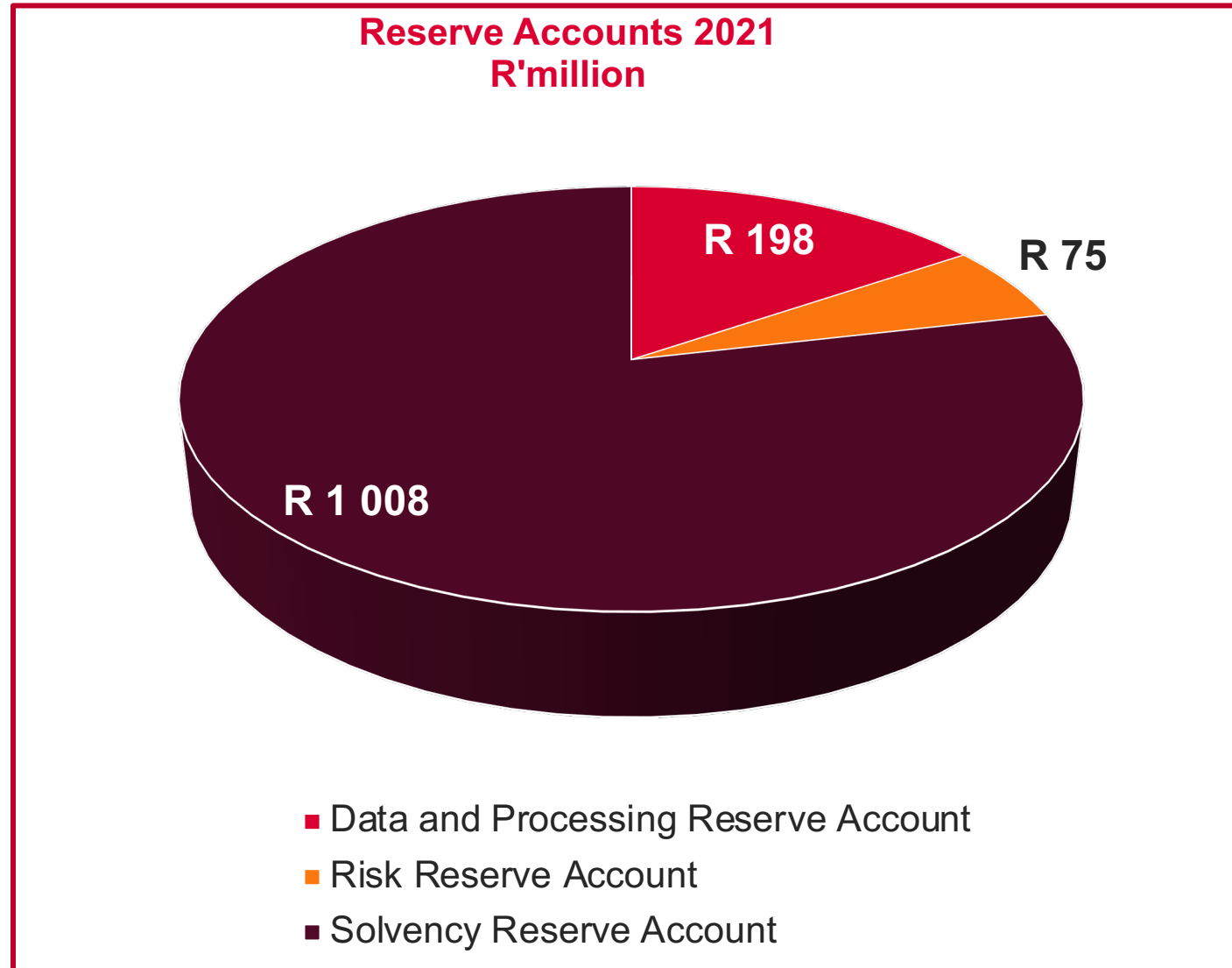
Non-current liabilities	(R 474 804)
-------------------------	-------------

<b>NET ASSET VALUE</b>	<b>R 37 194 011</b>
------------------------	---------------------

# Comparative Funds and Reserves (R'000 000)

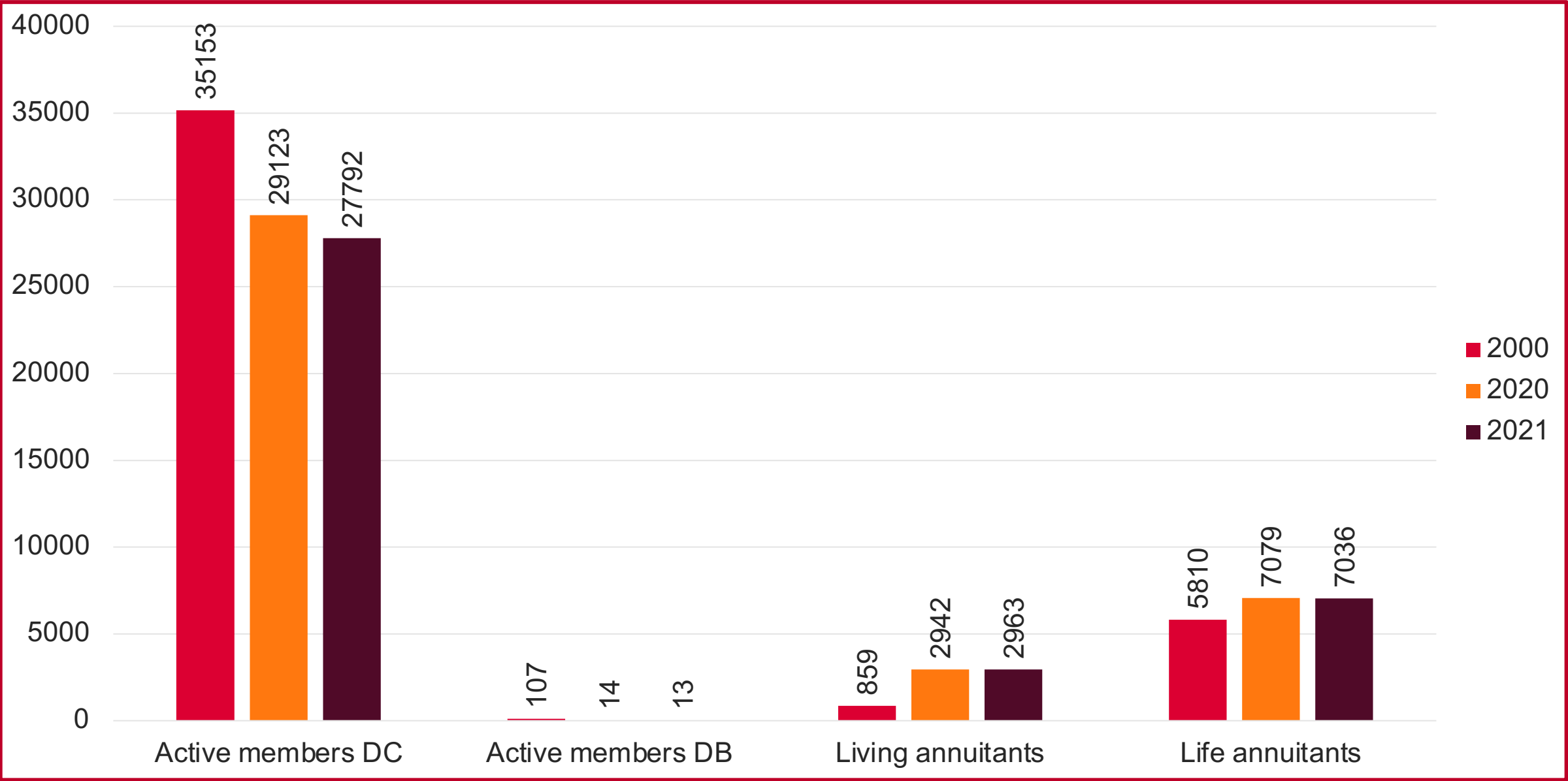


# Financial Results 31 March 2021 - Reserves



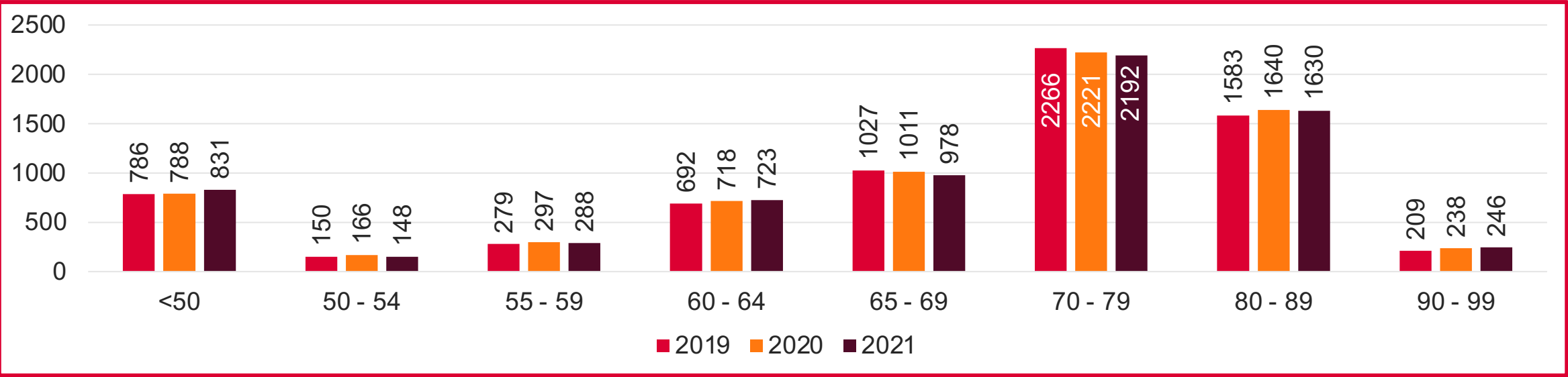


# Fund Composition: 31 March

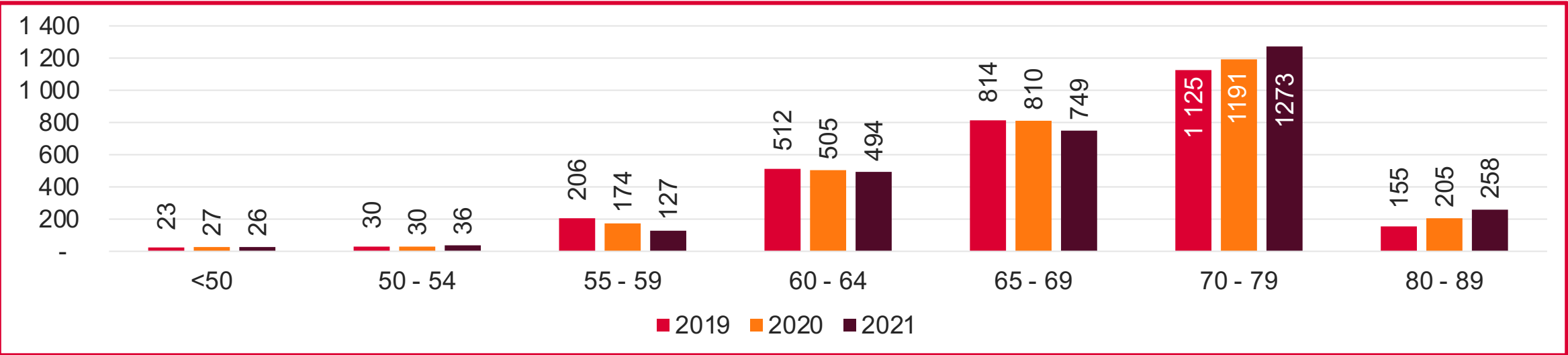


# Fund Composition: Age bands (over 3 year period)

## Life Annuitants



## Living Annuitants



# Who to contact

Department		Contact details
Service Centre For any queries/questions on payslips, IRP's monthly pension payments etc.	Administration team	0860 100 380
Administration Manager: Annuity Services Any escalations of queries not attended to by the Service Centre	Alta Praeg	011 286 1358 alta.praeg@Sanlam.co.za
Administration Manager Any escalations of queries not attended to by the Service Centre	Karien Maritz	011 286 1235 karien.maritz@Sanlam.co.za
Fund Consultant Any questions relating to the Rules, Benefits etc.	Adele Roux	011 286 1146 adele@simekaconsult.co.za
Principal Officer Escalation of any matter – administrative/consulting	Anesh Soonder	011 592 1400 anesh@soonderinc.co.za
Complaints Line To lodge a formal complaint	<a href="mailto:acacomplaintsandqueries@sanlam.co.za">acacomplaintsandqueries@sanlam.co.za</a>	